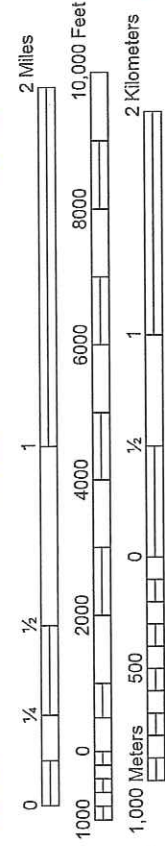


**U.S. Oil Sands Inc.
PR Spring Oil Sand Leases
2011 Coring Program Map**

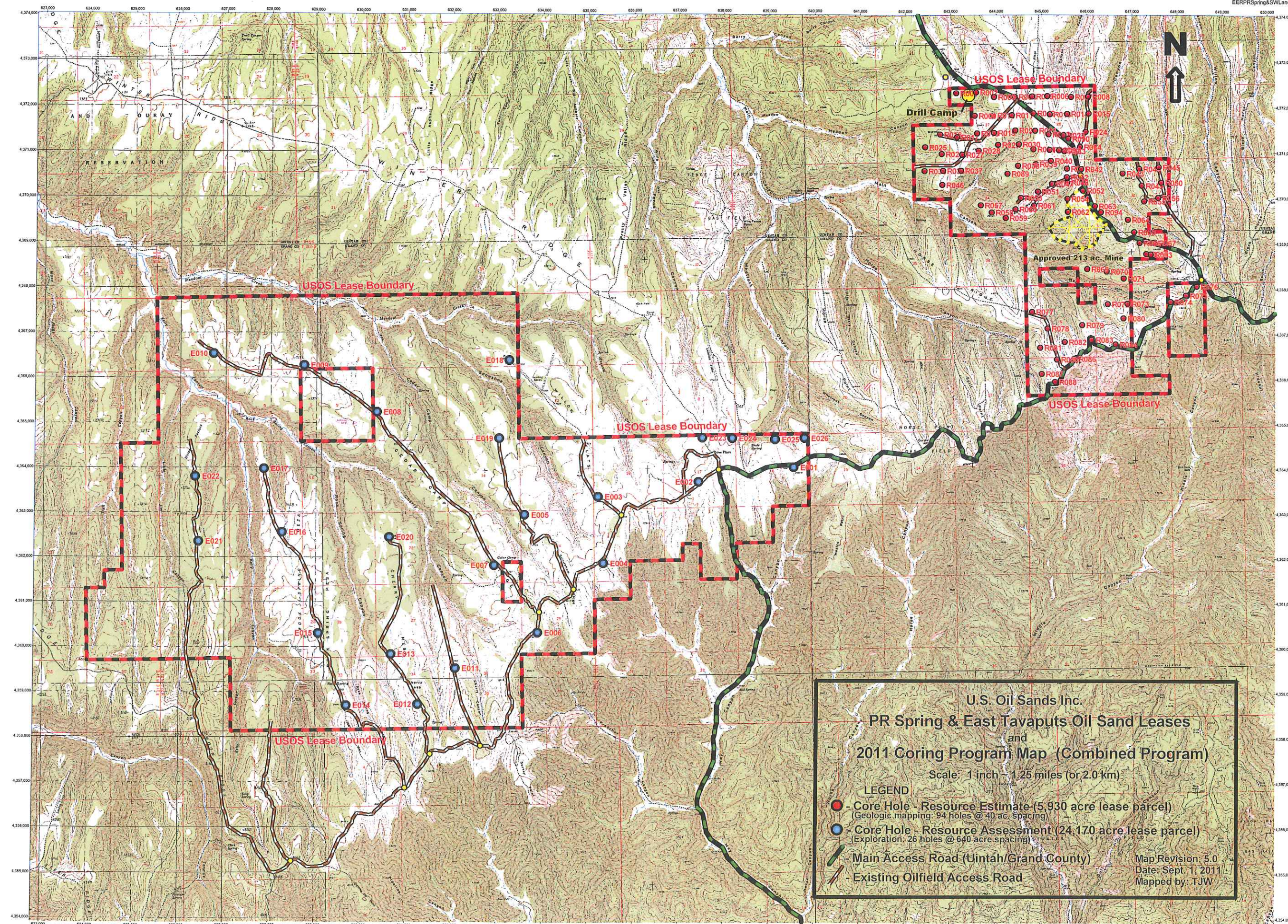
LEGEND Scale: 1 inch ~ 0.5 mile

- Core Hole Resource Estimate (Geologic mapping; 194 holes @ 40 ac spacing)
- Core Hole - High Density Infill Program (Detailed mine planning; 55 holes @ 400 ft. spacing)
- Core Hole Access (14' wide new construction)
- Core Hole Access (existing road or trail)



1927 North American Datum; UTM grid zone 12
Generated by Big Topo7 (www.igage.com)
Map compiled from USGS Quads: Sheep Canyon; UT P R Spring; UT



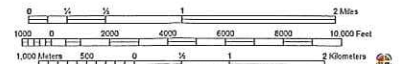


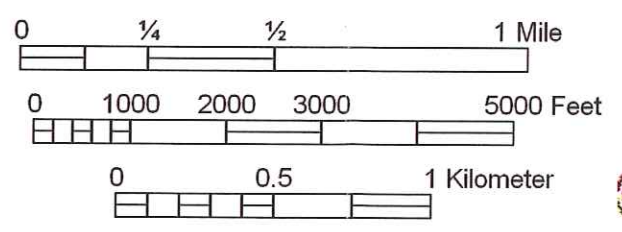
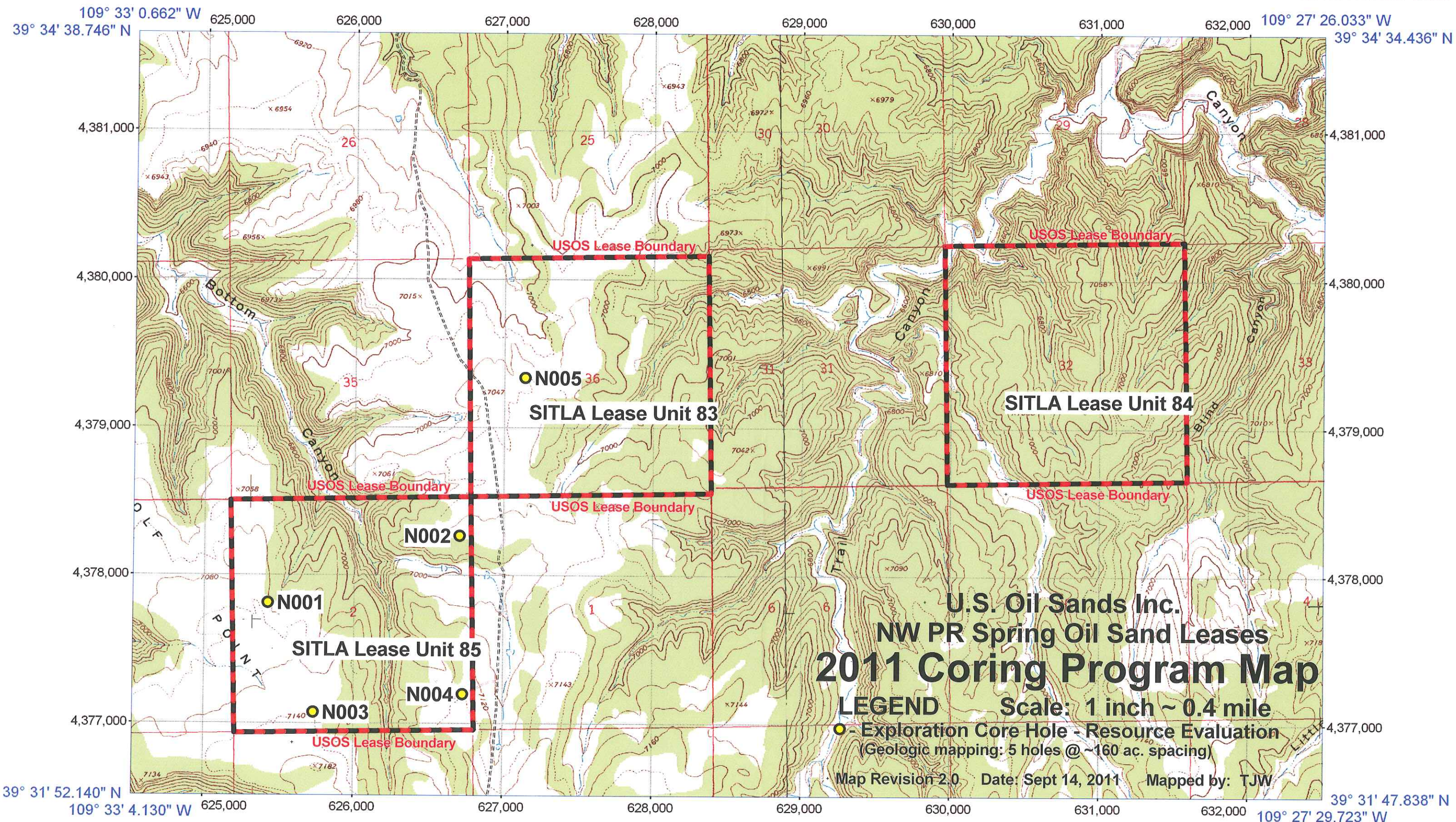
U.S. Oil Sands Inc.
 PR Spring & East Tavaputs Oil Sand Leases
 and
 2011 Coring Program Map (Combined Program)
 Scale: 1 inch = 1.25 miles (or 2.0 km)

LEGEND

- - Core Hole - Resource Estimate (5,930 acre lease parcel)
 (Geologic mapping: 94 holes @ 40 ac. spacing)
- - Core Hole - Resource Assessment (24,170 acre lease parcel)
 (Exploration: 26 holes @ 640-acre spacing)
- Main Access Road (Uintah/Grand County)
- Existing Oilfield Access Road

Map Revision: 5.0
 Date: Sept. 1, 2011
 Mapped by: TJW





1927 North American Datum; UTM grid zone 12
 Generated by BigTopo7 (www.igage.com)
 Map compiled from USGS Quads: Wolf Point, UT, Pine Spring Canyon, UT
 'SITLA Lease Units.it5' Scale: 1" = 0.381Mi 612Mt 2,009Ft, 1 Mi = 2.628", 1 cm = 241Mt